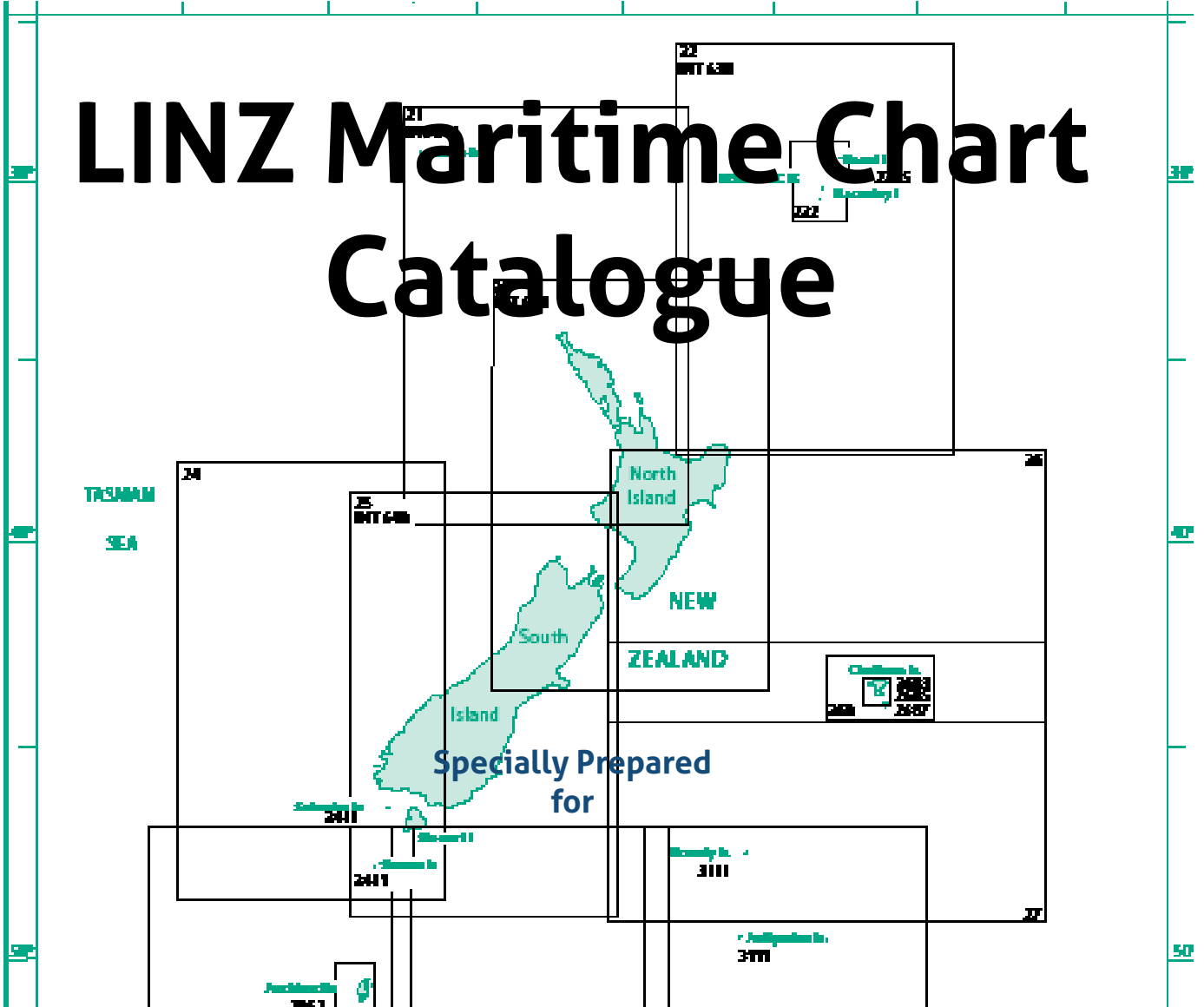


LINZ Maritime Chart Catalogue



All LINZ Maritime Charts printed by TuffPlans® are sourced from Land Information New Zealand data and are published with their authority.
Crown Copyright Reserved.

orders@tuffplans.com

This Marine Chart Catalogue

This Catalogue has been reproduced by TuffPlans® Ltd from the original Catalogue produced by Land Information New Zealand [LINZ]. Some content has been removed as it was considered unnecessary.

Scale

The Marine Charts printed by TuffPlans® are tested to be true-to-scale. As a result users can be sure that plotting distances on the charts will be accurate.

The statement we are required by LINZ to make "*Not to be used for navigation ...*" is we believe to protect LINZ from printing processes that may not be to scale.

Marine Charts from TuffPlans

Marine Charts supplied by TuffPlans® are printed on Tyvek® a synthetic paper like material that has unique qualities which make the charts: Waterproof, Resistant to most solvents, Tear Resistant, resistant to mould, combined with the digital wide format print process the charts are colourfast, UV proof and extremely durable.

TuffPlans Charts Don't Need Laminating

Because we print on Tyvek® our Marine Charts do not need laminating to protect them from moisture, mould or mildew, in fact they can be dunked in seawater and still remain as good as new!

Because they don't need laminating they can be rolled and folded without affecting the chart or it's appearance.

Resistance to Solvents

Our charts are generally resistant to most solvents, we have had a client who dunked a chart into a drum of diesel without any detrimental affect to the chart.

Size and Packing

Most charts are 1050mm x 720mm when flat, they are supplied folded to approximately 180mm x 365mm.

Charts are also available at 50% of original size, please note that these are NOT to scale.

Charts are supplied folded in a resealable plastic bag.

TuffPlans Limited

PO Box 38461, Howick, New Zealand

0800 737 764

www.tuffplans.com --- orders@tuffplans.com

NEW ZEALAND CHART CATALOGUE

15TH EDITION

NZ 202

Published December 2010

CONTENTS

Disregard
these page Numbers

Record of Corrections	2
NZ Clearing Area	3
Chart Catalogue	4
Chart Information	5
Use of Charts	6
Product Information	7
NZ Garbage Requirements & Chart Positions	8
Maritime Safety Information	9
Indices	
Pacific Ocean	10 & 11
New Zealand	12 & 13
North Island	14 & 15
South Island	16 & 17
Maritime Zone	18 & 19
Auckland Zone	20 & 21
Cook Strait Zone	22 & 23
Southern Zone	24 & 25
South West Pacific Ocean	26 & 27
Tonga	28 & 29
Southern Ocean and Ross Dependency	30 & 31
Numerical Chart List	32
Notes	33

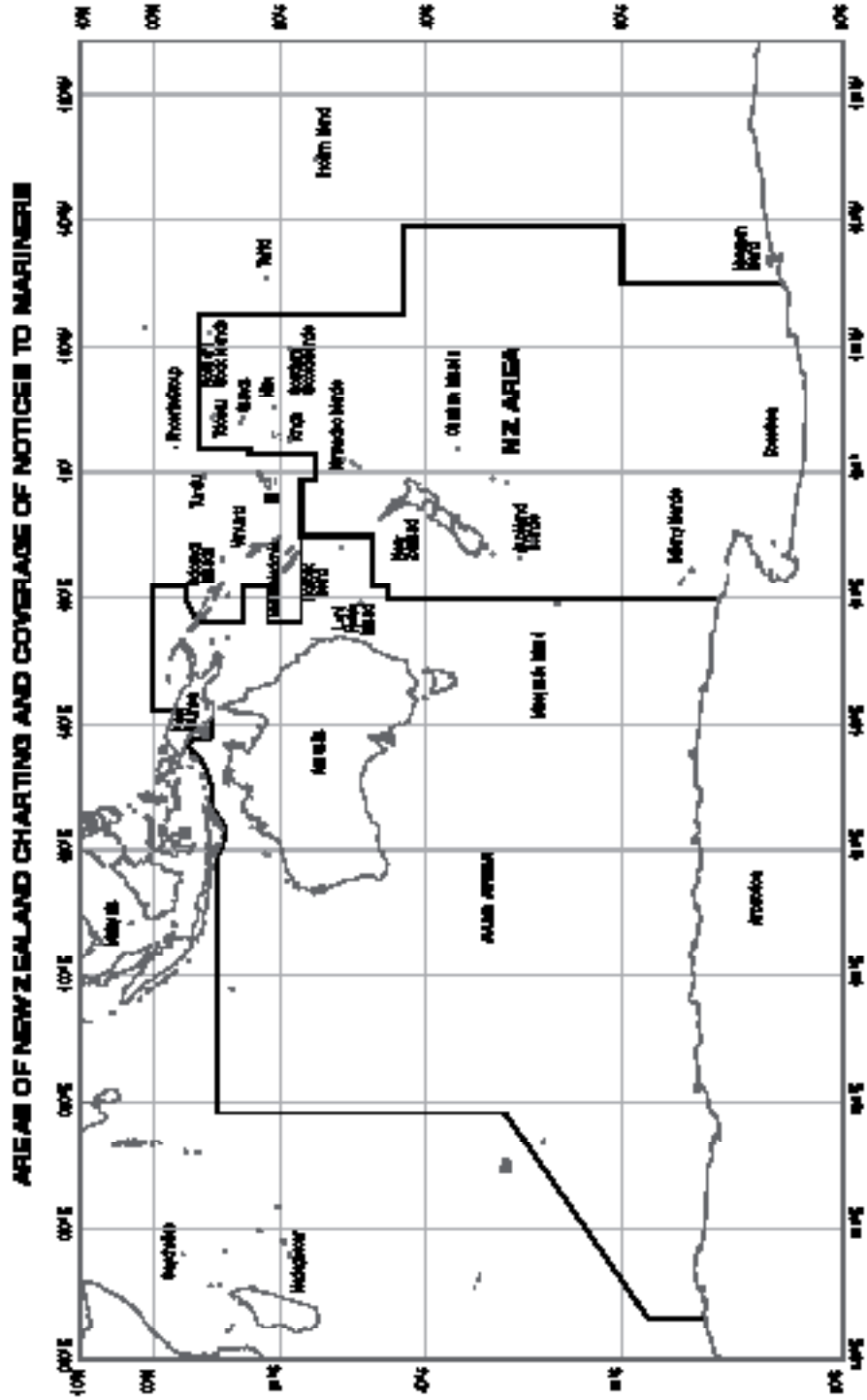
ISSN 0113-6567

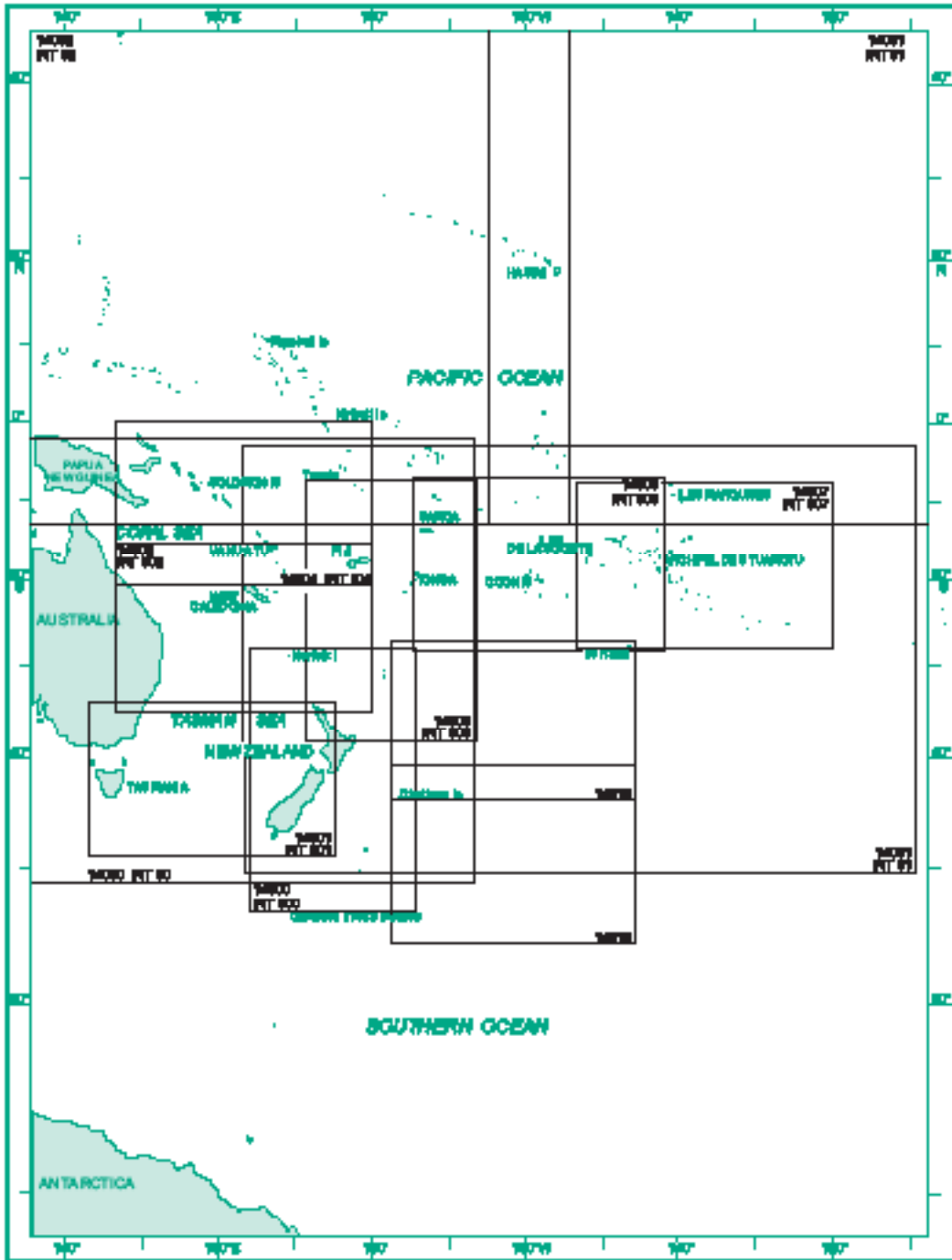
Published by Land Information New Zealand
New Zealand Hydrographic Authority

Orders@LINZ.govt.nz

NZ CHARTING AREA

In accordance with agreements between New Zealand (NZ), Australia (AU) and the British Admiralty (BA) for reducing duplication in charting activities, New Zealand has a defined Charting Area (NZ AREA)



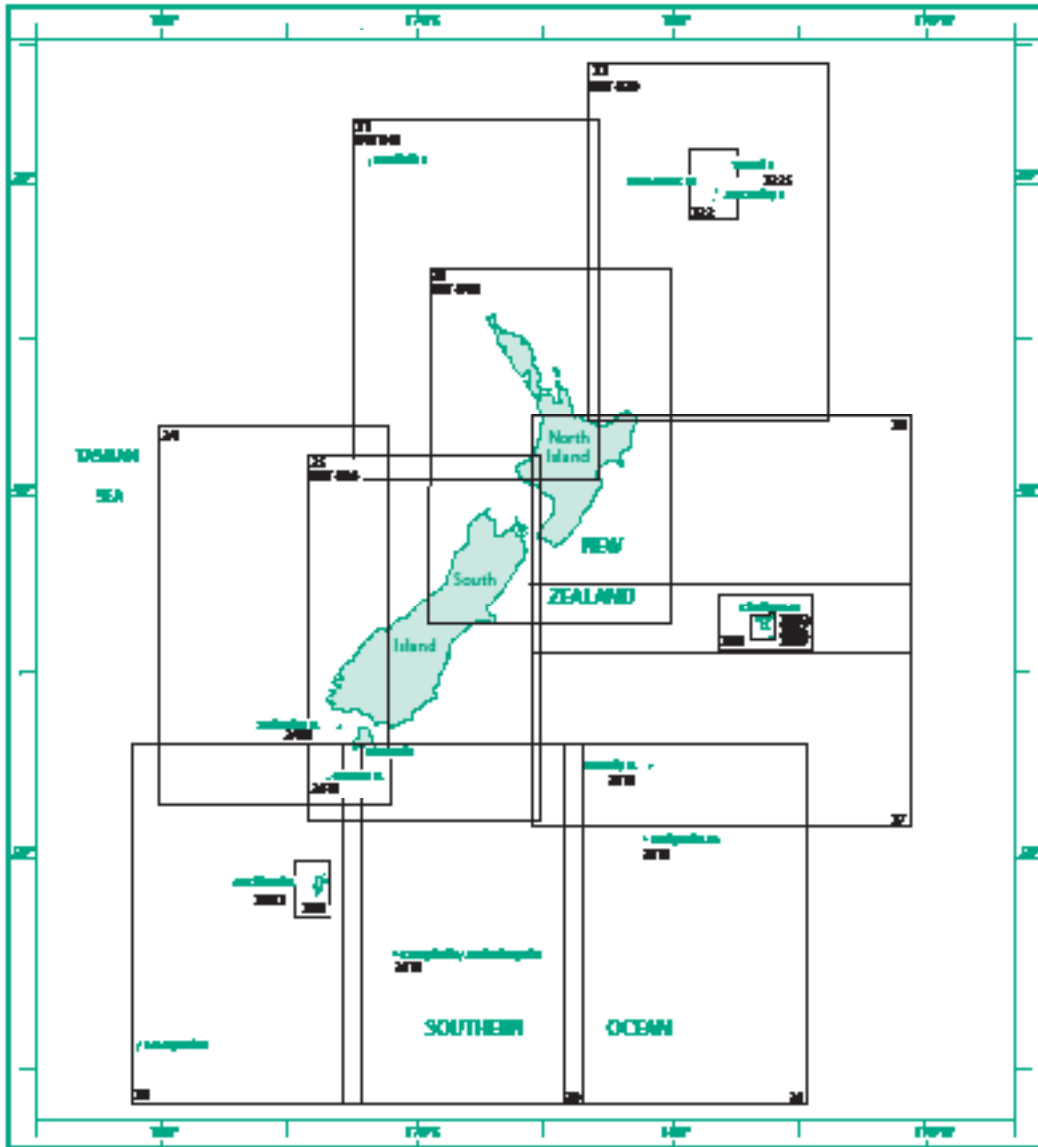


1

PACIFIC OCEAN (Small scale planning and passage charts)

11

Chart No.	Title	Scale 1:	Published	New Edition
International Charts				
INT 01 NZ 14001	North Pacific Ocean (Southwestern Part) _____	10 000 000	4/1988	1/1997
INT 02 NZ 14002	North Pacific Ocean (Southeastern Part) _____	10 000 000	7/1987	4/1997
INT 03 NZ 14003	Australia and adjacent waters _____	10 000 000	10/1987	10/2008
INT 04 NZ 14004	South Pacific Ocean (Western portion) _____	10 000 000	1/1988	10/2008
INT 000 NZ 14800	New Zealand including Norfolk Island and Campbell Island / Nihoa Isupua _____	3 800 000	4/1974	7/2007
INT 001 NZ 14801	Tasman Sea, New Zealand to S.E. Australia _____	3 800 000	1/1973	7/2007
INT 002 NZ 14802	Tasman and Coral Seas, Australia to Northern New Zealand and Fiji _____	3 800 000	1/1974	7/2007
INT 004 NZ 14804	Coral and Solomon Seas and adjacent seas _____	3 800 000	1/1988	10/1999
INT 005 NZ 14805	New Zealand to Fiji and Samoa Islands _____	3 800 000	3/1978	7/2007
INT 006 NZ 14806	Tonga to Archipelago Tasmann _____	3 800 000	10/1977	7/2007
INT 007 NZ 14807	Southern Polynesia _____	3 800 000	10/1987	4/1997
New Zealand Charts				
NZ 14812	Chatham Islands to Pacific-Australian Seas _____	3 800 000	1/1987	4/1999
NZ 14813	Chatham Islands to the Pacific _____	3 800 000	1/1987	4/1999

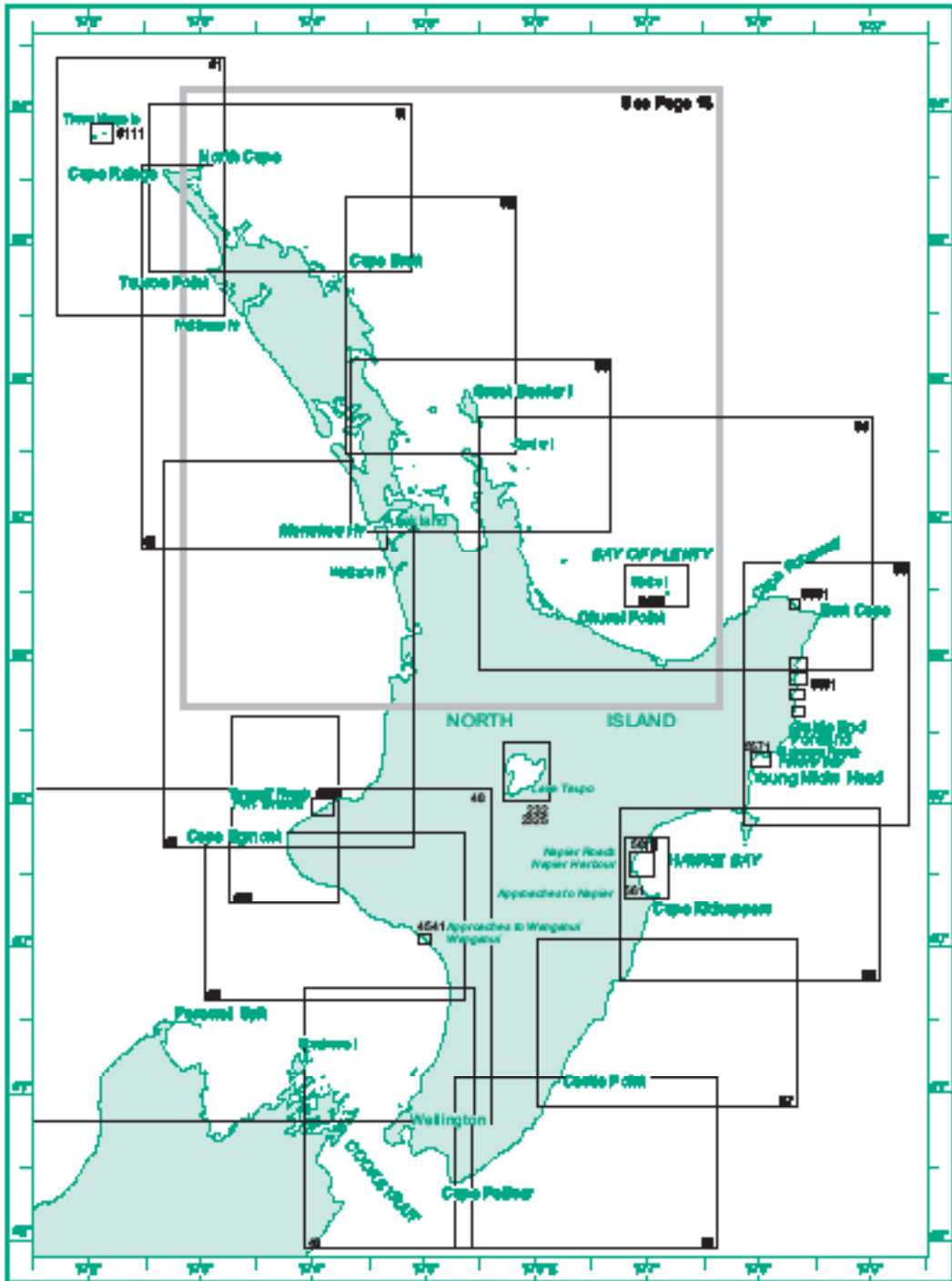


1

NEW ZEALAND

13

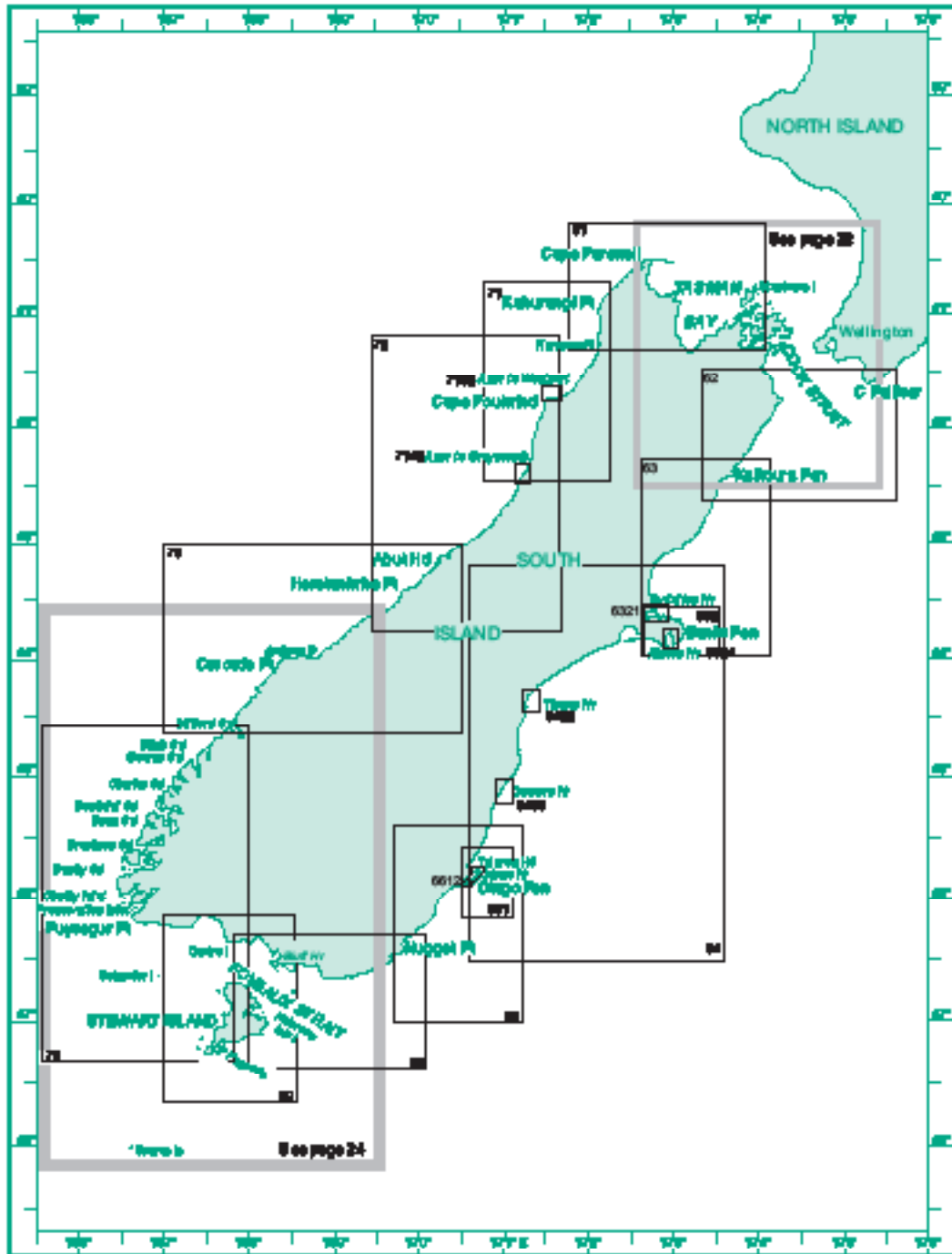
Chart No.	Title	Scale 1:	Published	New Edition
BNT 841 NZ 21	Marlborough Islands to Cape Egmont	1 800 000	4/1882	4/2006
BNT 888 NZ 22	Kermadec Islands to East Cape	1 800 000	1/1882	5/2012
BNT 848 NZ 23	North Island	1 800 000	7/1881	5/2012
NZ 24	Western Approaches to South Island	1 280 000	7/1888	4/2006
BNT 848 NZ 25	South Island	1 800 000	4/1881	5/2012
NZ 26	East Cape to Cook Strait including Chatham Islands	1 280 000	10/1879	4/2006
NZ 27	Chatham Islands to Bounty Islands	1 280 000	10/1879	4/2006
NZ 28	Stewart Island/Fidraia to Macquarie Island	1 280 000	1/1888	4/2006
NZ 29	Stewart Island/Fidraia to Campbell Island/Mitoko Inupuku	1 280 000	1/1888	4/2006
NZ 31	Bounty and Antipodes Islands and part of the Southern Ocean	1 280 000	4/1888	4/2006
NZ 222	Kermadec Islands	200 000	4/1884	5/2006
NZ 286	Chatham Islands	200 000	10/1888	
NZ 288	Auckland Islands	100 000	4/1882	
NZ 2228	Plans in the Kermadec Islands		4/1884	5/2006
	Racal Island	30 000		
	Carls and Chocomaia Islands	30 000		
	Marsden Island	30 000		
NZ 2883	Approaches to Whangarei		12/2013	
	Cross Bay	12 500		
	Port Hutt	10 000		
NZ 2885	Plans in the Chatham Islands		12/2013	
	Whangai Bay	10 000		
	Kaingaroa Harbour	10 000		
	Port Whangai Wharf	5 000		
NZ 2887	Pitt Street		12/2013	
	Orange	10 000		
	Riverside	10 000		
NZ 2882	Plans in the Auckland Islands		4/1882	
	Enderby Island to Smith Harbour	50 000		
	Smith Harbour to South Cape	50 000		
NZ 3111	Campbell Island/Mitoko Inupuku, Bounty Islands and the Antipodes Island Group		5/2006	
	Campbell Island/Mitoko Inupuku	150 000		
	Pomoukeke Harbour	50 000		
	Bounty Islands	100 000		
	Bounty Islands	25 000		
	Antipodes Island Group	100 000		
	Auroras Bay	25 000		



NORTH ISLAND

15

Chart No.	Title	Scale 1:	Published	New Edition
NZ.41	North Cape	200 000	10/1872	1/2003
NZ.42	Cape Fingis to Murchison Harbour	200 000	10/1881	4/2001
NZ.43	Murchison Harbour to Cape Egmont	200 000	10/1880	5/1999
NZ.44	Cape Egmont to Pungihiki River	200 000	1/1888	7/2001
NZ.46	Cook Strait	200 000	1/1888	7/2000
NZ.48	Western Approaches to Cook Strait	400 000	4/1888	4/2000
NZ.51	Taranaki Point to Cape Brett	200 000	4/1878	4/2001
NZ.52	Cape Brett to Gevira Island	200 000	10/1874	7/2004
NZ.53	Brown Head to Slipper Island including Hauraki Gulf	200 000	10/1882	5/2012
NZ.54	Gevira Island to East Cape	200 000	10/1884	7/1997
NZ.55	Cape Runaway to Table Cape	200 000	4/1888	
	Fairly Bay	70 000		
NZ.56	Table Cape to Blackhead Point	200 000	10/1883	5/2001
NZ.57	Blackhead Point to Gentle Point	200 000	10/1883	5/2001
	Castlepoint Anchorage	15 000		
NZ.58	Gentle Point to Cape Palmer	200 000	1/1888	5/2001
NZ.232	Lake Taupo (Temporary)		5/2000	
	Haramakangi Flats	30 000		
	Tapanui Bay	20 000		
	Waikato Flats Entrance	5 000		
	Lake Taupo	75 000		
NZ.443	Approaches to Port Taranaki	100 000	10/1883	5/2010
NZ.551	Approaches to Napier	70 000	10/2000	
NZ.2325	Plans in Lake Taupo (Temporary)		5/2000	
	Western Bay	40 000		
	Whiti Bay	20 000		
	Mokapu Bay	10 000		
	East Harbour, Kowhai Point	5 000		
NZ.4111	Three Kings Islands	30 000	1/2000	
	North West Bay	5 000		
	South East Bay	5 000		
NZ.4432	Taranaki Roads	20 000	1/1884	7/2008
	Port Taranaki	5 000		
NZ.4541	Approaches to Whangarei	10 000	4/1888	
	Whangarei Flats, Castleiff Wharves	7 500		
NZ.5123	Approaches to Whangarei / White Island	80 000	10/1887	7/2001
NZ.5551	Plans on the East Coast		4/1887	
	Whipara Bay	40 000		
	Tairāne Bay	40 000		
	Hicks Bay	40 000		
	Arara Bay	40 000		
	Tolaga Bay	40 000		
NZ.5571	Powery Bay and Approaches to Gisborne	24 000	5/2000	
	Gisborne Harbour and Entrance	7 000		
NZ.5512	Napier Roads	20 000	10/2000	4/2011
	Napier Harbour	7 500		



1

SOUTH ISLAND

17

Chart No.	Title	Scale 1:	Published	New Edition
NZ.01	Kaituma River to Stephens Island	200 000	10/1884	4/1999
NZ.02	Cape Pelorus to Kaituma Peninsula	200 000	4/1888	
NZ.03	Kaituma Peninsula to Banks Peninsula	200 000	4/1888	
NZ.04	Banks Peninsula to Otago Peninsula	400 000	7/1878	5/2003
NZ.05	Kaitiaki Point to Mappet Point	200 000	10/1883	1/2003
NZ.06	Mappet Point to Foveaux Island (Cantua Island)	200 000	12/1887	5/2009
NZ.08	Stewart Island/Fidraia	200 000	7/2001	5/2009
NZ.71	Geyserville to Kahurangi Point	200 000	10/1883	5/2002
NZ.72	Cape Foulwind to Harahimara Point	200 000	7/1884	5/2002
NZ.73	Abut Head to Milford Sound Jackson Bay	200 000 50 000	10/1884	5/2002
NZ.76	Western Approaches to Foveaux Strait	200 000	10/1882	5/2009
NZ.832	Banks Peninsula	70 000	7/1888	5/2000
NZ.881	Approaches to Otago Harbour	100 000	10/1883	5/2000
NZ.8321	Lyttelton Harbour/Whalewapa Port of Lyttelton	20 000 7 500	10/1878	5/2000
NZ.8324	Akaroa Harbour French Bay	30 000 15 000	4/2000	
NZ.8422	Approaches to Timaru Timaru Harbour	30 000 7 000	7/1888	4/2009
NZ.8433	Approaches to Oamaru Oamaru Harbour	30 000 10 000	4/2003	
NZ.8812	Otago Harbour Port Chalmers Dunedin Wharves	10 000 5 500 0 000	1/1888	7/2004
NZ.7132	Approaches to Westport Westport Harbour (North) Westport Harbour (South)	30 000 7 000 7 000	7/1888	5/2006
NZ.7142	Geyserville Harbour and Approaches Approaches to Geyserville Geyserville Harbour	 30 000 10 000	10/1884	

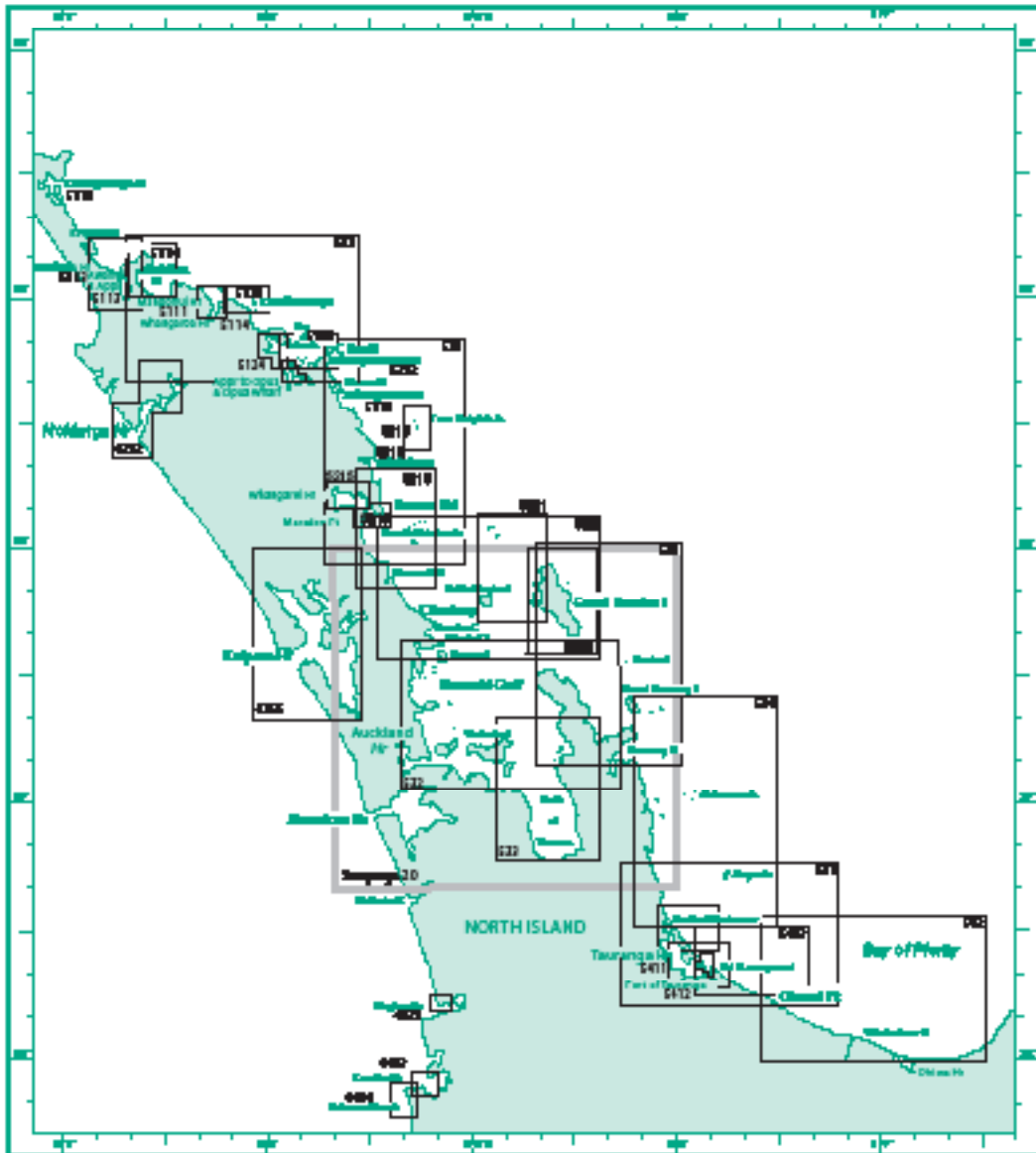
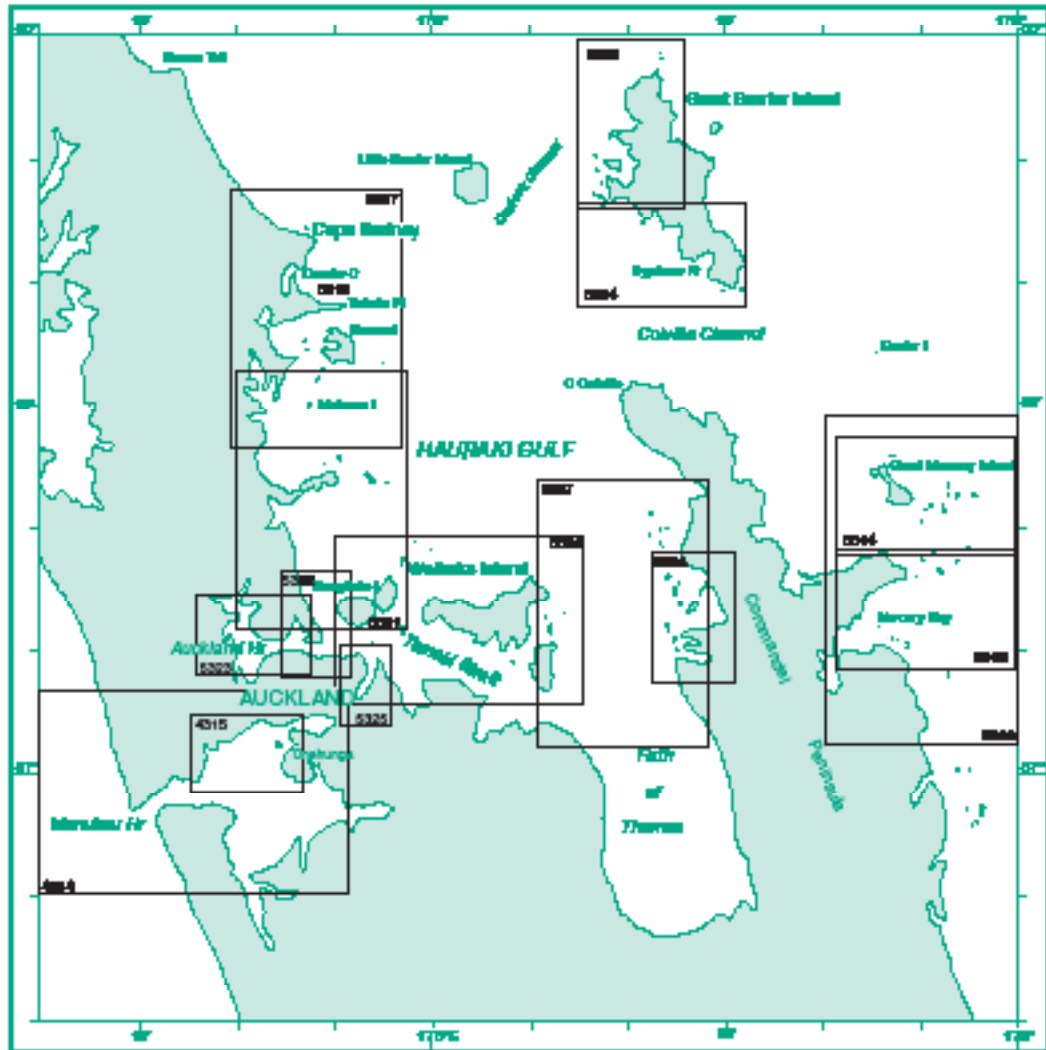


Chart No.	Title	Scale	Published	New Edition
NZ.812	Cape Kaitiaki to Cape Brett	1:100 000	10/1878	8/2013
NZ.821	Cape Brett to Brown Tail	1:100 000	7/1878	10/2010
NZ.822	Brown Tail to Kaitiaki Island including Great Barrier Island (John Island)	1:100 000	7/1874	4/2011
NZ.831	Great Barrier Island (John Island) to Mercury Bay	1:100 000	10/1878	4/2011
NZ.832	Approaches to Auckland	1:100 000	10/1878	8/2012
NZ.833	Firth of Thames	1:100 000	10/1878	12/1999

NORTHERN ZONE

19

Chart No.	Title	Scale 1:	Published	New Edition
NZ.834	Moeraki Bay to Kaitiaki Entrance	100 000	10/1878	12/1999
NZ.841	Mayer Island to Okaiwi Point	100 000	3/1878	1/1998
NZ.842	Mohiti Island to Pohitahi Point	100 000	4/1887	
	Whakakura River Entrance	7 000		
	Okaiwi Harbour Entrance	25 000		
NZ.4212	Hokitika Harbour	40 000	4/1888	4/2001
	Bar and Entrance	20 000		
NZ.4228	Kaipara Harbour	70 000	10/1888	7/2008
	Whiroa River (Continuation)	25 000		
NZ.4421	Ngārua Harbour (Whangarei)	12 000	10/1878	7/2001
NZ.4423	Kaitiaki Harbour	20 000	4/1882	7/2001
NZ.4424	Taharua Offshore Terminal	20 000	10/1878	2/2013
NZ.8111	Plans between Paungaranga and Whangarei		10/1877	4/2001
	Paungaranga Harbour	25 000		
	Mangonui Harbour	9 000		
	Whangarua Harbour	25 000		
NZ.8113	Plans in Rangitikei Bay	20 000	4/2000	2/2013
	Rangitikei Bay and Awamui River Approaches	60 000		
	Awamui River	20 000		
	Hokitika Harbour	25 000		
NZ.8114	Doubtless Bay and Whangarei Harbour		10/1877	4/2001
	Doubtless Bay	40 000		
	Whangarei Harbour and Approaches	25 000		
NZ.8121	Cassell Passage	20 000	7/1878	10/1994
NZ.8124	Plans in the Bay of Islands		7/1884	
	Kaitiaki Inlet and To Piria Inlet	25 000		
	Approaches to Opua	15 000		
	Opua Wharf	8 000		
NZ.8128	Bay of Islands	20 000	7/1884	
NZ.8212	Plans between Whangarua and Omaha Cove		10/1882	12/1999
	Whangarua Harbour	12 000		
	Taharua Harbour	12 000		
	Omaha Cove	8 000		
NZ.8214	Meredon Point	18 000	7/2004	12/2014
NZ.8218	Whangarei Harbour	18 000	7/2004	12/2014
	Whangarei Harbour (Continuation to Town Basin)	10 000		
NZ.8219	Four Knights Islands, High Peak Rocks and Sugarloaf Rock	20 000	12/2013	
NZ.8219	Approaches to Meredith Point	20 000	4/2010	09/2013
NZ.8221	Greatest Channel and Makohine Islands	20 000	3/2011	
NZ.8222	Great Barrier Island (John Island)	20 000	3/2011	
NZ.8411	Taranaki Harbour, Kaitiaki Entrance to Mount Mangonui	40 000	10/1882	7/2004
NZ.8412	Part of Taranaki	18 000	1/1882	10/2004
	Western Channel (Continuation)	10 000		
NZ.8413	Approaches to Taranaki	20 000	1/1882	1/1998



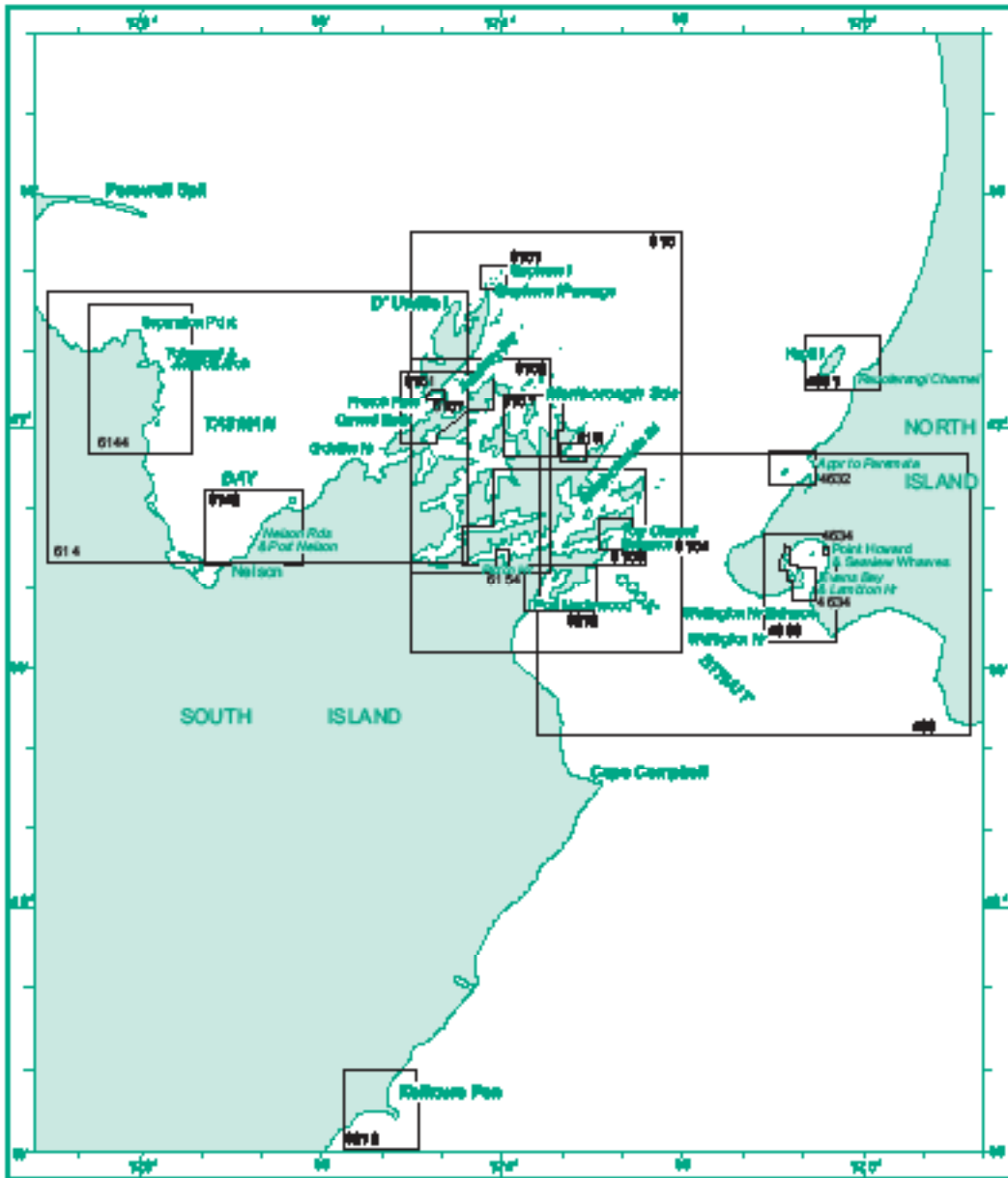
1

AUCKLAND ZONE

21

Chart No.	Title	Scale 1:	Published	New Edition
NZ.4314	Miraflores Harbour LPG Terminal	40 000 3 000	10/1992	5/2012
NZ.4315	Approach to Owhango Owhango Wharf	18 000 2 000	10/1992	06/2011
NZ.8223	Great Barrier Island (Northwestern Part)	28 000	10/2010	
NZ.8224	Great Barrier Island (Southern Part)	28 000	10/2010	
NZ.8227	Great Island to Waikanae River	40 000	4/2000	
NZ.8314	Misery Islands	28 000	11/2012	
NZ.8315	Misery Bay	28 000	0/2014	
NZ.8319	Great Misery Island / Akaroa to Clava Bay Whitanga Harbour	80 000 10 000	4/1979	0/2001
NZ.8321	Mihuraangi Harbour to Rangitoto Island	40 000	4/2000	
NZ.8322	Auckland Harbour East Collops Wharves Commercial Harbour	18 000 5 000 7 500	4/2000	5/2012
NZ.8323	Auckland Harbour West Kani Point Wharf Chelsea Wharf	18 000 7 500 7 500	4/2000	5/2012
NZ.8324	Tamaki Strait and Approaches including Waiheke Island	40 000	7/1977	5/2012
NZ.8325	Tamaki River	12 000	7/1994	1/2008
NZ.8327	Waiheke Island to Commercial Point	40 000	3/2000	
NZ.8328	Commercial Harbour	28 000	3/2000	

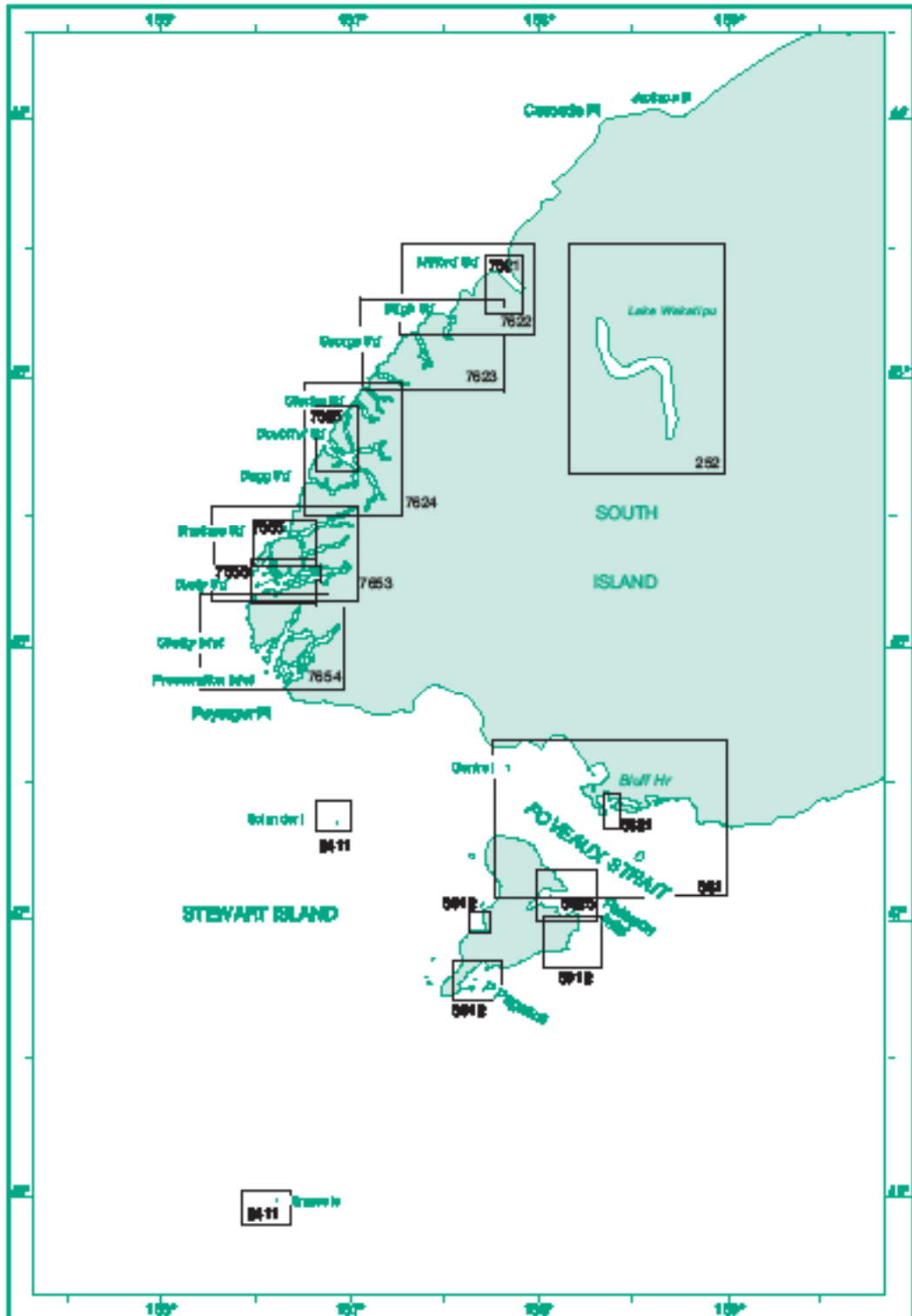
1



COOK STRAIT ZONE

23

Chart No.	Title	Scale 1:	Published	New Edition
NZ.483	Approach to Wellington	100 000	7/1888	5/2011
NZ.514	Tasman Bay	100 000	7/1888	4/2009
	Port Mouton	20 000		
	Mapua	20 000		
NZ.518	Marlborough Sounds	100 000	4/1882	5/2011
NZ.4831	Flaxmorewi Channel and Kapiti Island	27 000	1/1883	1/2000
NZ.4832	Approach to Porirua Harbour	18 000	4/1882	7/2000
NZ.4833	Wellington Harbour	28 000	1/1887	7/2000
NZ.4834	Wellington Harbour Entrances and Plans of Wharves		1/1887	7/2000
	Entrance to Wellington Harbour	12 500		
	Egmont Bay	7 000		
	Lambton Harbour	7 000		
	Point Howard and Seaview Wharves	7 000		
NZ.5142	Nelson Harbour and Entrances	38 000	1/1888	5/2008
	Port Nelson	5 000		
NZ.5144	Abel Tasman	38 000	4/2000	
	Port Golden Bay (Teatohu)	10 000		
NZ.5151	Plans in the Marlborough Sounds		1/1883	10/2011
	Approach to Te Anau (French Pass)	35 000		
	Te Anau (French Pass)	10 000		
	Forsyth and Gussie Bays	30 000		
	Port Gore	30 000		
	Stephens Passage	30 000		
NZ.5152	Pelorus Sound and Hawke	88 000	4/1888	
	Hawke	15 000		
NZ.5153	Queen Charlotte Sound	38 000	1/1887	5/2011
NZ.5154	Tony Channel Entrances and Picton Harbour		1/1887	5/2011
	Tony Channel Entrances	11 000		
	Picton Harbour	10 000		
	Picton Wharves	3 000		
NZ.5212	Plans on the North East Coast of South Island		2/1888	
	Port Underwood	35 000		
	Kaikoura Peninsula	30 000		
	Inglis Bay	10 000		
	South Bay	10 000		



SOUTHERN ZONE

25

Chart No.	Title	Scale 1:	Published	New Edition
NZ.282	Lake Waikato	100 000	10/2009	
	Quarantoon Bay to Plover Point	50 000		
	Fourteen Arms to Quarantoon Bay	20 000		
	Quarantoon Bay	5 000		
NZ.281	Approaches to Bluff and Fivorton/Opotiki	100 000	10/1987	6/2009
	Fivorton/Opotiki	40 000		
NZ.2411	Sutton Islands/Tini Haha and Solander Island (Hauraki)		7/2008	
	Sutton Islands/Tini Haha	30 000		
	Solander Island (Hauraki)	30 000		
	Ha Ha Bay	7 500		
NZ.2821	Bluff Harbour and Entrance	12 000	10/1988	6/2009
	Port of Bluff	7 000		
NZ.2825	Pelorus Inlet / Whaka A To Wha		3/2011	
	Pelorus Inlet / Whaka A to Wha	40 000		
	Hemaphys Bay to Urua Inland	15 000		
	Confusion Wha to Pelorus Inlet	15 000		
NZ.2812	Plans in Stewart Island/Fikiana		7/2001	
	Port Adams and Lochs River/Tukohavakoko	40 000		
	Port Papanui/Pikihia	40 000		
	East Harbour	40 000		
NZ.7821	Milford Sound / Pōpōtahi	25 000	8/2008	
	Deep Water Basin and Fresh Water Basin	10 000		
NZ.7822	Milford Sound / Pōpōtahi to Safford Sound	25 000	4/1988	6/2009
NZ.7823	Bligh Sound to General Sound	25 000	4/1988	
NZ.7824	Charles Sound to Dagg Sound	25 000	4/1988	6/2009
	Deep Cove	10 000		
NZ.7825	Thompson Sound and Doubtful Sound/Pelorus	25 000	8/2008	
	Mark Cove and Dune Cove	7 500		
	Pelorus Passage (Small Passage)	10 000		
NZ.7823	Brambles Sound and Dusky Sound	25 000	1/1987	6/2009
NZ.7824	Ghally and Preservation Inlets	25 000	1/1987	2/2002
	North Port	25 000		
	South Port	25 000		
NZ.7825	Brambles Sound	25 000	8/2008	
NZ.7829	Dusky Sound	25 000	8/2008	
	Confusion of Dusky Sound	25 000		

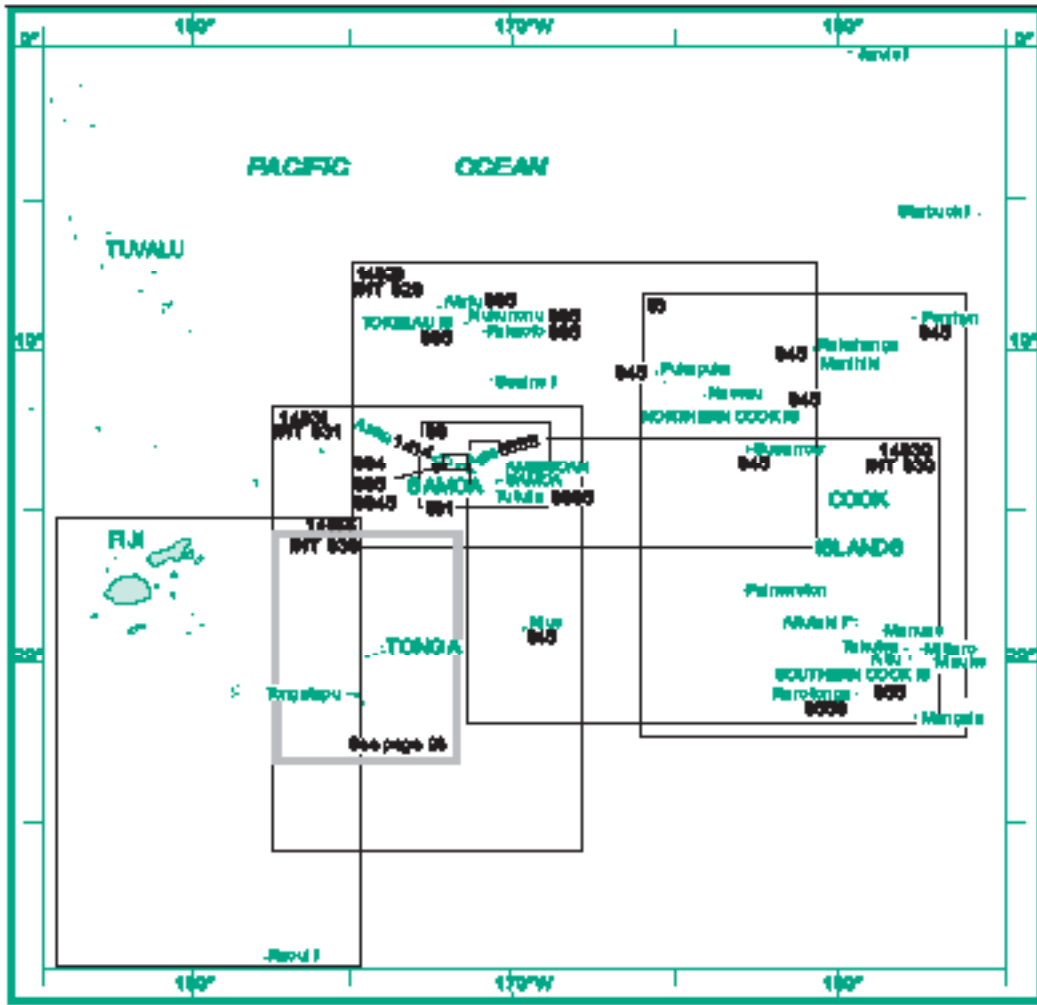


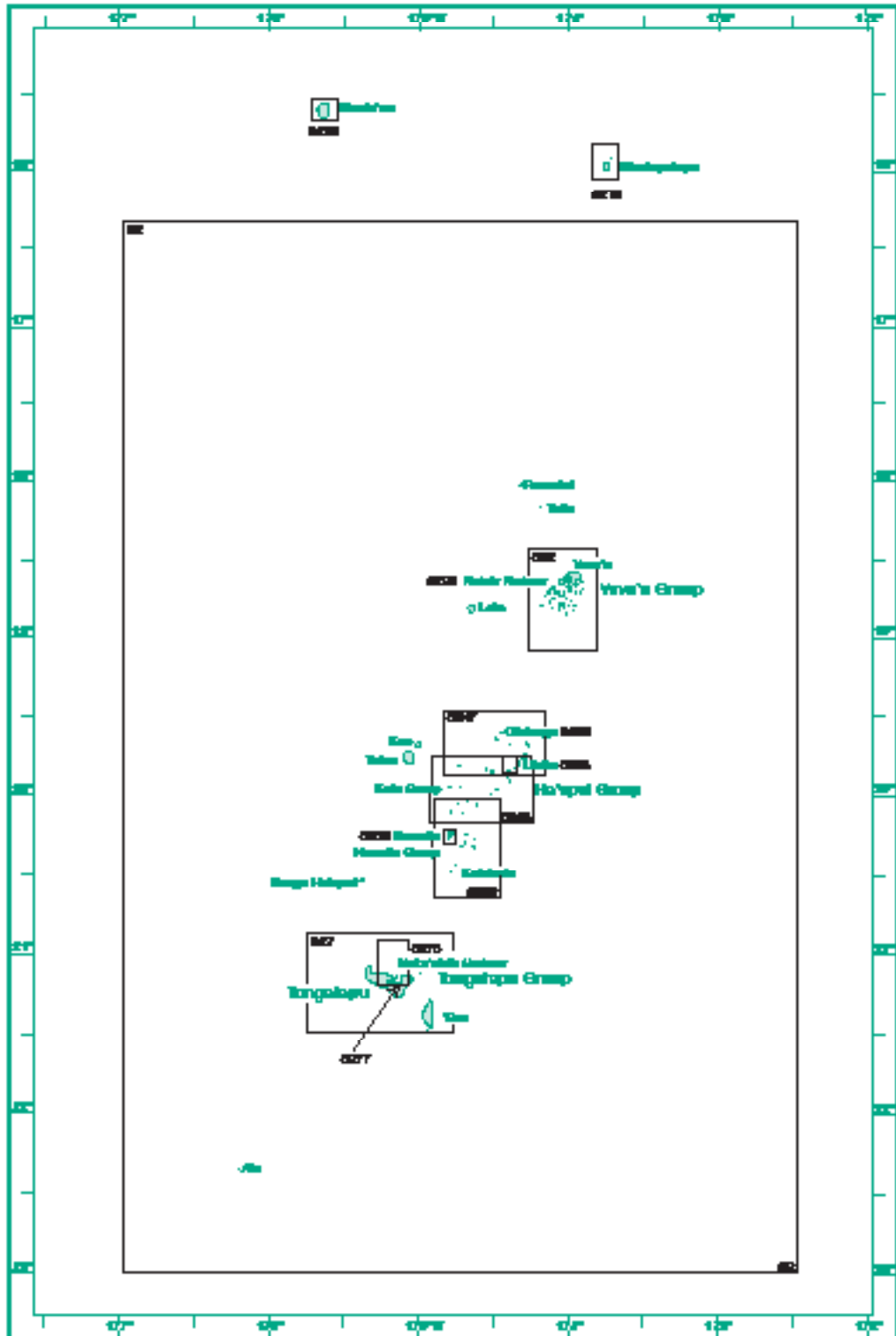
Chart No.	Title	Scale	Published	New Edition
NZ.88	Samoan Islands	800 000	9/2010	
NZ.93	Cook Islands	1 800 000	4/1999	10/1997
NZ.945	Niue	1 800 000	4/2002	
	Atafu Anchorage	8 000		
	Atafu Landing	1 000		
* NZ.994	Plans in Samoa		9/2010	
	Fagaofu Bay	25 000		
	Saleifa Harbour	27 000		
	Faleafaga Road	25 000		
	Saleifa Bay Road	50 000		
	Faleafaga Harbour	33 300		
	Uafafu Bay	12 200		
	Saleifa Harbour	25 000		
	Vaitolo Bay	20 000		
	Faleafaga Harbour	30 000		
	Saleifa Bay	50 000		
Fagaofu Bay	24 270			
NZ.994	Apiafua Strait	88 880	9/2010	
	Makuluva Bay	88 880		

SOUTH WEST PACIFIC OCEAN

27

Chart No.	Title	Scale 1:	Published	New Edition
NZ 000	Approach to Apia	88 000	0/2010	
NZ 000	Tokelau	888 000	1/1987	4/2009
	Atafu	100 000		
	Nukunono	100 000		
	Faleolo	100 000		
NZ 040	Plans of the Cook Islands - northern sheet		10/1980	
	Faleapua	100 000		
	Muaea	75 000		
	Suvaevao	100 000		
	Suvaevao Lagoon Entrance	25 000		
	Murihiki	75 000		
	Murihiki Anchorage	15 000		
	Fakaofo	50 000		
	Pongia	75 000		
	Tarua Passage to Gudgeon Bay	12 500		
	Tarua Passage	8 000		
NZ 020	Plans of the Cook Islands - southern sheet		10/1980	
	Aitutaki	80 000		
	Aitutaki Anchorage	15 000		
	Pikemanian	75 000		
	Mifidrao	75 000		
	Makao	75 000		
	Maruaroa	75 000		
	Takarua	75 000		
	Afu	75 000		
	Margate	75 000		
* NZ 1414	Aaua Harbour	18 000	10/1980	
NZ 0045	Plans in Apolonia Strait		0/2010	
	Sakalanga Harbour	10 000		
	Makirua Harbour	10 000		
NZ 0005	Apia Harbour	7 000	1/2007	
* NZ 0008	Islands in Araxinao Sound		10/1980	
	Pige Pige Harbour	25 000		
	Suava Island	50 000		
	Takaloa Island	80 000		
	Morua Islands	100 000		
	Rona Atoll	100 000		
NZ 0006	Faofuanga	40 000	10/1980	
	Approach to Auaia & Auaia Harbours	9 000		
	Auaia Harbour	9 000		
	Auaia Reef Passage	2 000		
INT 000 NZ 14029	Samoa Islands to Northern Cook Islands and Tokelau	1 800 000	4/1980	4/1997
INT 000 NZ 14030	Samoa Islands to Southern Cook Islands	1 800 000	4/1980	4/1997
INT 001 NZ 14031	Samoa Islands to Tonga including Niue	1 800 000	4/1980	4/1997
INT 000 NZ 14038	Fiji to Kermadec Islands including Tongatapu	1 800 000	10/1987	10/1999

* Further Chart - Not available in NZ Marine



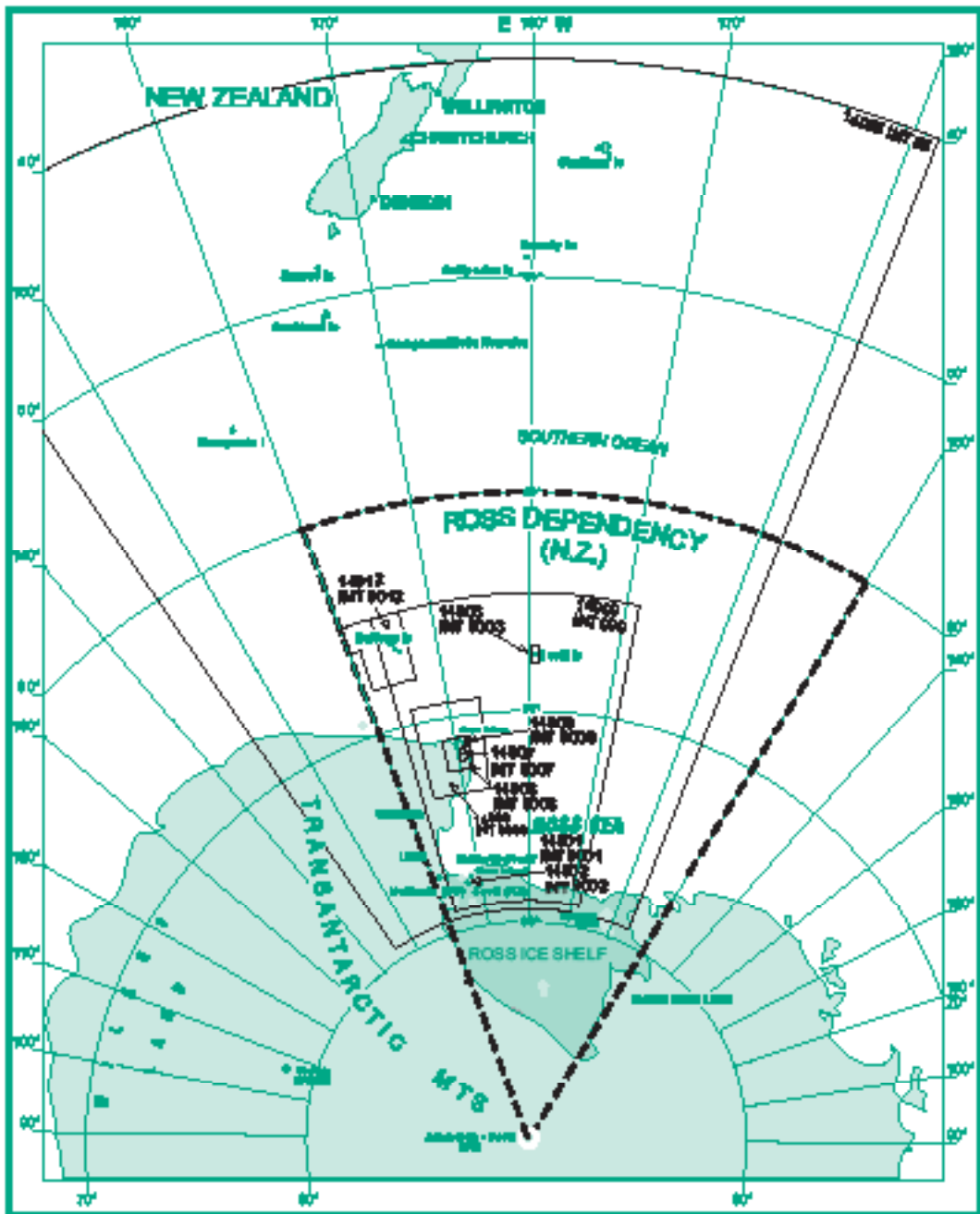
1

TONGA

29

Chart No.	Title	Scale 1:	Published	New Edition
T 02 NZ.02	Tonga	700 000	10/1993	
T 022 NZ.022	Vava'u Group	80 000	07/2010	4/2011
T 027 NZ.027	Approach to Tongatapu including 'Eua	100 000	10/1993	
T 0215 NZ.0215	Ninkuputapu Group and Ninko'ou		1/1999	
	Ninkuputapu and Tahiti	100 000		
	Ninko'ou	100 000		
	Ninkuputapu Harbour	5 000		
	Ninkuputapu Harbour Entrance	5 000		
T 0225 NZ.0225	Nukunono Harbour	10 000	07/2010	
*T 0230 NZ.0230	Anchorages in the Friendly Isles		10/1993	
	Ofakanga Island and Anchorages	12 000		
T 0235 NZ.0235	Approach to Likiep	10 000	4/2000	
	Aua Lina Mala Entrance	5 000		
*T 0247 NZ.0247	Hi'epai Group - northern portion	72 000	10/1993	
*T 0248 NZ.0248	Hi'epai Group - southern portion	72 000	10/1993	
*T 0250 NZ.0250	Nukunono Group	72 000	7/1993	
*T 0255 NZ.0255	Anchorages in Tonga		7/1993	
	Nukunono Harbour	10 150		
T 0275 NZ.0275	Approach to Nuku'alofa Harbour	20 000	7/1997	4/2010
T 0277 NZ.0277	Nuku'alofa Harbour	10 000	4/2010	

* Publishers Chart - Not available in NZ/Mariner



1

SOUTHERN OCEAN and ROSS DEPENDENCY

31

Chart No.	Title	Scale 1:	Published	New Edition
INE 005 NZ 14006	From Sea to New Zealand	10 000 000	10/1994	1/2007
INE 000 NZ 14000	From Sea	2 000 000	4/1999	
INE 0004 NZ 14001	Cape Foyale to Pruss Point	80 000	7/2007	
INE 0002 NZ 14002	Milfordo Station and Scott Base	8 000	7/2007	
INE 0005 NZ 14003	Approaches to Scott Island Scott Island	70 000 25 000	8/2008	
INE 0006 NZ 14008	Cape Adare and Cape Halkett Hilly Beach Steeles Hook Cape Adare Cape Halkett	 15 000 15 000 50 000 50 000	1/2003	8/2008
INE 0007 NZ 14007	Pomorie Islands	80 000	1/2003	8/2008
INE 0008 NZ 14008	Cape Adare to Cape Denison	200 000	1/2003	8/2008
INE 0009 NZ 14009	Cape Hooker to Cookson Island	800 000	8/2004	
INE 0012 NZ 14012	Bellary Islands Bellary Steamout (Confession)	200 000 200 000	8/2008	